

The
LAST AGE
of
DIVINITY

Dare Talley



Nihon

(Yayoi Period, Japan)



We've been traveling for days. Can we take a break.

Toshii
Kitsune

We're too close
To stop now.
Unless you want
to carry me?

Buriji
Tanaka



Despite us both
being YoKai, I will
bring more attention
to us.



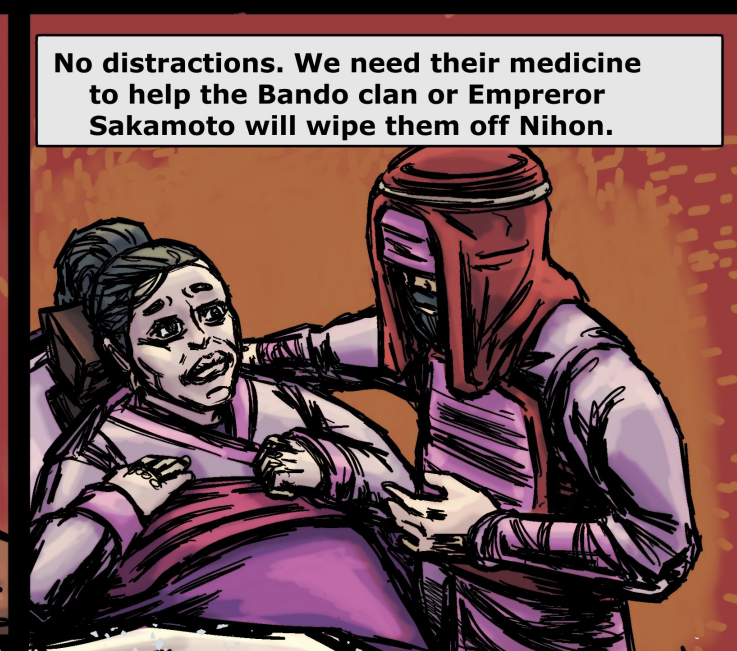
Eh, you are just
being lazy.

I'm saving my strength
to save you from the next
smelly human wanting a
fight.



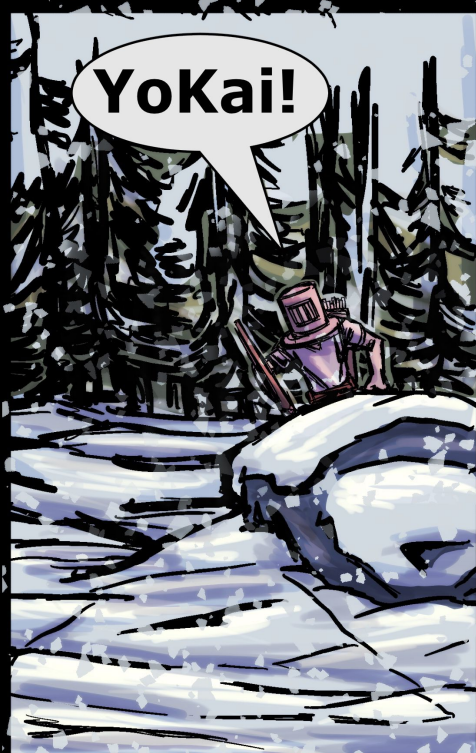
Humans aren't all
bad.







Oh, no.
Someone
spotted us.



YoKai!



YoKai!

YoKai!



YoKai!

YoKai! YoKai!



Toshii, stay in
my bag.

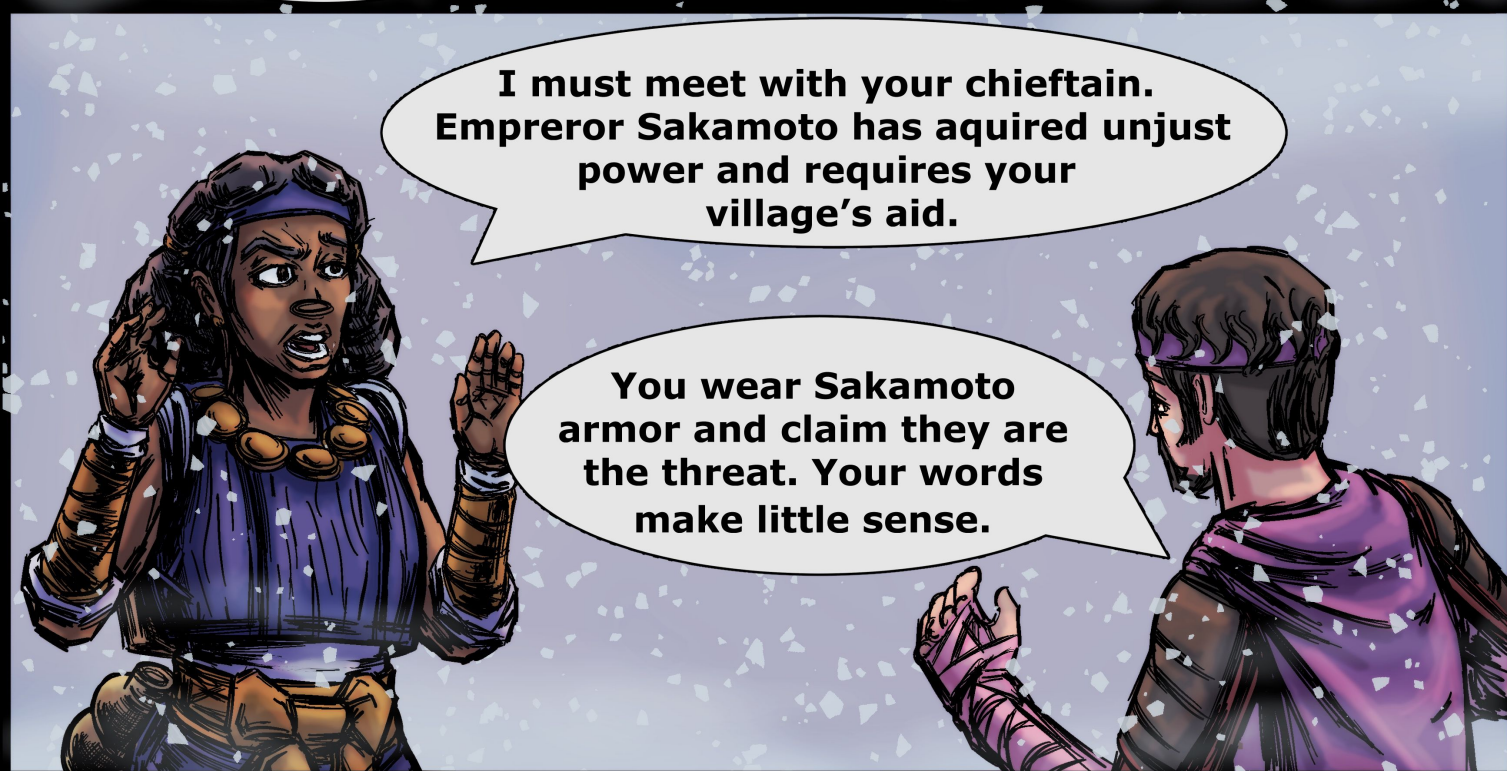


**Is that Umi Buzo,
on land?**

**I've never seen
A YoKai of this
complexion.**



**Intruder, we allow
no YoKai to walk in
our home.**



**I must meet with your chieftain.
Empreror Sakamoto has aquired unjust
power and requires your
village's aid.**

**You wear Sakamoto
armor and claim they are
the threat. Your words
make little sense.**



**I have fought under
Sakamotos' military and yes,
he is worse than the rumors.**



**No Yokai allowed!
You may leave or
you will die.**

I'm not going to hurt anyone, please.

"Woah"

I've been hit!

We must protect our home!

I don't travel empty handed.

So be it.



Aah...



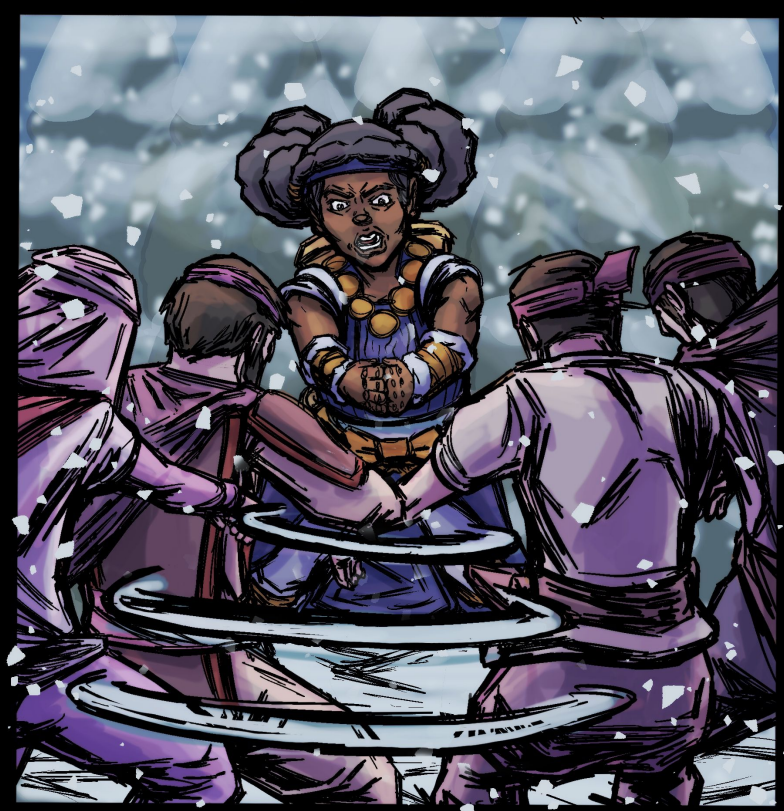
Oof



Ugh!




This dispute is over!



Call off your unit. I must speak with your chieftan.

Unhand me, Yokai.



You want a monster
Well I'm not! I'm your
one hope to...


Survive.




They got me pretty
bad, Toshii.




Stand down, everyone.
This Yokai is no threat.



Vile humans,
I told you not to
trust them.



You
shouldn't, Toshii.
It's too risky.

A woman with dark skin and hair in a bun, wearing a blue tunic and brown arm guards, is riding a large white Kitsune. The Kitsune has a red circular mark on its forehead and is running through a snowy, mountainous landscape. In the background, a group of men in traditional Japanese attire are following them. The sky is filled with dark, swirling clouds and a large yellow sun or moon.

**Toshii, they know
not what they do.**

**It's a
real Kitsune!!**

**You're lucky we're
going to the village of
medicine.**